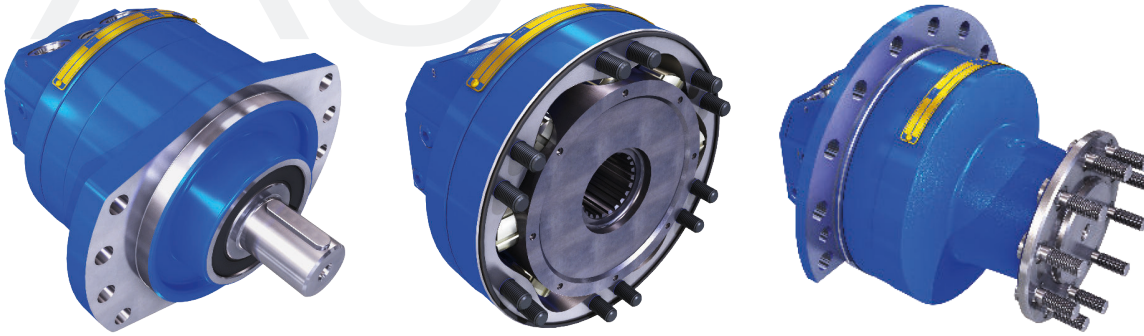


XJ range

Compact, modular design, radial piston, multi-lobed, CAM motor

- Two speed options
- Dynamic and parking brake options
- Freewheel capability
- Radial piston, multi-stroke CAM design
- Displacement 376cc—8092 cc/rev
- Continuous pressure of 350bar



XJ motor data

	FrameSize	XJ05							
Frame Diameter 225mm	Approx Weight. 44kg	Nominal Displacement (cc/rev)	380	430	470	520	570		
		Geometric Displacement (cc/rev)	376	425	472	519	565		
		Specific Torque (Nm/bar)	6.0	6.8	7.5	8.3	9.0		
		Max Pressure (bar)*	450	450	450	450	450		
		Max Cont. Speed - 1 Displacement (rpm)	250	235	240	220	200		
		Max Cont. Speed - 2 Displacement (rpm)	250	235	240	220	200		
		Max Cont. Power (kW)	29	29	29	29	29		
	FrameSize	XJ08							
Frame Diameter 263mm	Approx Weight. 60kg	Nominal Displacement (cc/rev)	460	600	730	870	1000	1150	
		coming soon							
	FrameSize	XJ12							
Frame Diameter 295mm	Approx Weight. 94kg	Nominal Displacement (cc/rev)	730	890	1050	1200	1350	1540	
		coming soon							
	FrameSize	XJ20							
Frame Diameter 338mm	Approx Weight. 177kg	Nominal Displacement (cc/rev)	1670	1880	2100	2300	2500		
		Geometric Displacement (cc/rev)	1666	1884	2092	2301	2505		
		Specific Torque (Nm/bar)	26.5	30.0	33.3	36.6	39.9		
		Max Pressure (bar)*	450	450	450	450	450		
		Max Cont. Speed - 1 Displacement (rpm)	125	115	100	90	85		
		Max Cont. Speed - 2 Displacement (rpm)	150	135	125	110	100		
		Max Cont. Power (kW)	70	70	70	70	70		
	FrameSize	XJ40							
Frame Diameter 338mm	Approx Weight. 182kg	Nominal Displacement (cc/rev)	3330	3770	4180	4600	5010		
		Geometric Displacement (cc/rev)	3332	3768	4184	4602	5010		
		Specific Torque (Nm/bar)	53.0	60.0	66.6	73.2	79.7		
		Max Pressure (bar)*	450	450	450	450	450		
		Max Cont. Speed - 1 Displacement (rpm)	150	145	140	120	110		
		Max Cont. Speed - 2 Displacement (rpm)	150	145	140	130	120		
		Max Cont. Power (kW)	110	110	110	110	110		

